

# Firesimulator Brief Setup Guide

Takayuki ITO

Visiting Research Scientist, USC/ISI  
Postdoctoral Fellow, Shintani's Lab., Nagoya Inst. of Tech.  
ito@isi.edu, itota@ics.nitech.ac.jp

## 1. Introduction

The aim of this setup guide is to show how to install firesimulator without any difficulty for English users. Unfortunately, the setup program was created by using Japanese VB6. This means every instruction in the setup program was written in Japanese, and these instructions are not shown correctly on English version of MS-Windows 95/98/2000/NT. I hope this setup guide helps all English users to successively install the firesimulator.

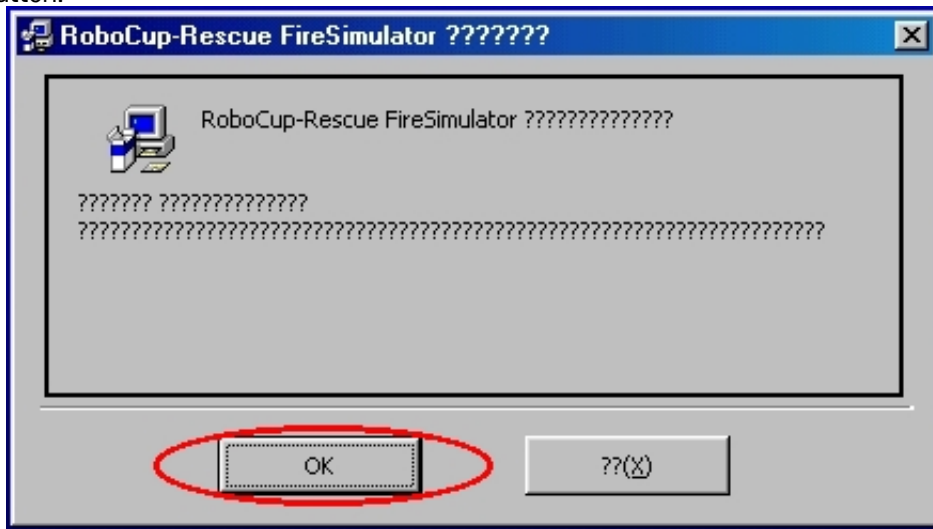
## 2. Installation

1. Download the archive file exe000422.LZH from <http://robomec.cs.kobe-u.ac.jp/robocup-rescue/exe000422.LZH>
2. Extract exe000422.LZH by using LHA extractor or another extractor.

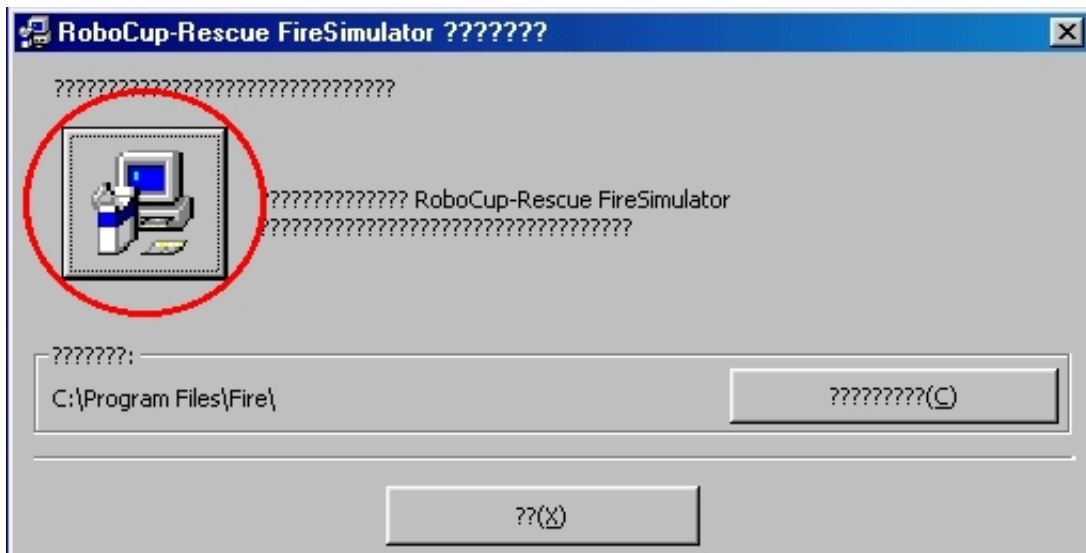
**NOTE 1:** If you use a typical extractor (e.g. PowerArchiver <http://www.powerarchiver.com>), you can run setup.exe file directly from the LZH archive. But, **don't run setup.exe directly from the LZH archive.** This might be problem. What you need to do is first extract the files from the archive and then run setup.exe.

**NOTE 2:** Some extracting applications truncated the name of the CAB file. You should check the name of the CAB file.

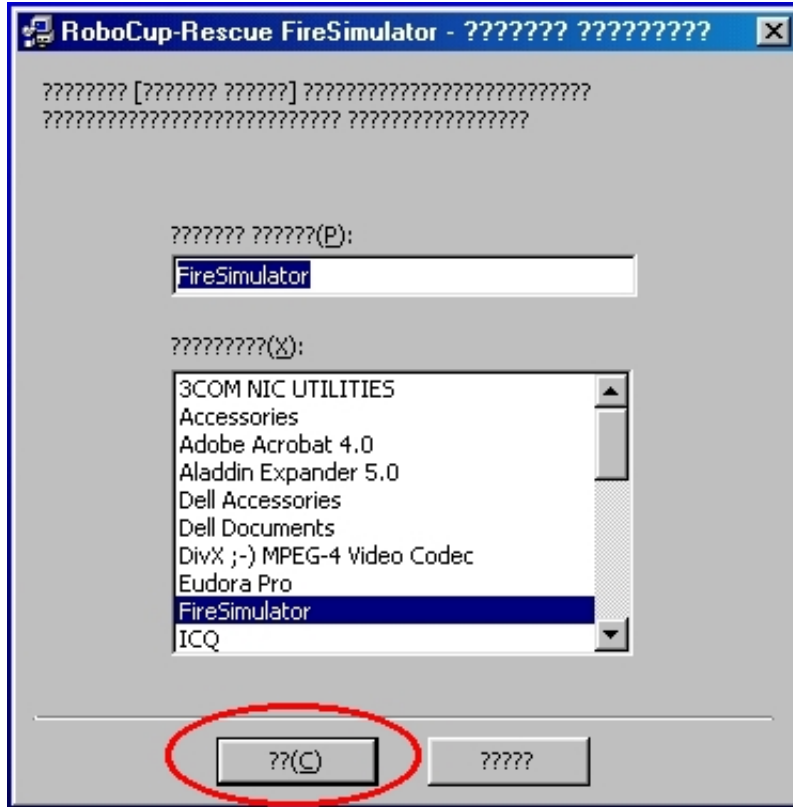
3. Start setup.exe (Double click the file "setup.exe").
4. Push the "O.K" button.



5. Push **the Computer Icon**. Don't push "??(X)" button :-).



6. Push "??(C)" button.



- 7. Wait for completion
- 8. Push O.K button.



9. Finish. Enjoy! :-)

### 3. Conclusions

Firesimulator itself is working very well. Enjoy Robocup Rescue world.

### Links

The latest version of this guide is <http://www.isi.edu/~ito/Rescue/SetupGuideFiresim.html>.